



A WORLD CLASS FOOD PROCESSING HUB NEAR AURANGABAD

Maharashtra's largest food park
spread over 110 acres offering
integrated infrastructure conforming
to international standards



www.paithanmegafoodpark.com

An emerging hub for food processing industries



Paithan Mega Food Park is situated in a strategic location, spread over 110 acres designed to meet international standards in providing common infrastructure. A unique park with advantage of backward and forward linkages.

Promoted by Nath Biogenes (I) Ltd, associate company of Nath Group with interests in agri research & biotechnology, hybrid seeds & seedlings, paper pulp & paper and decades of experience in contract farming.

Paithan Mega Food Park is where quality, integrity and commitment to growth blend in perfect harmony.

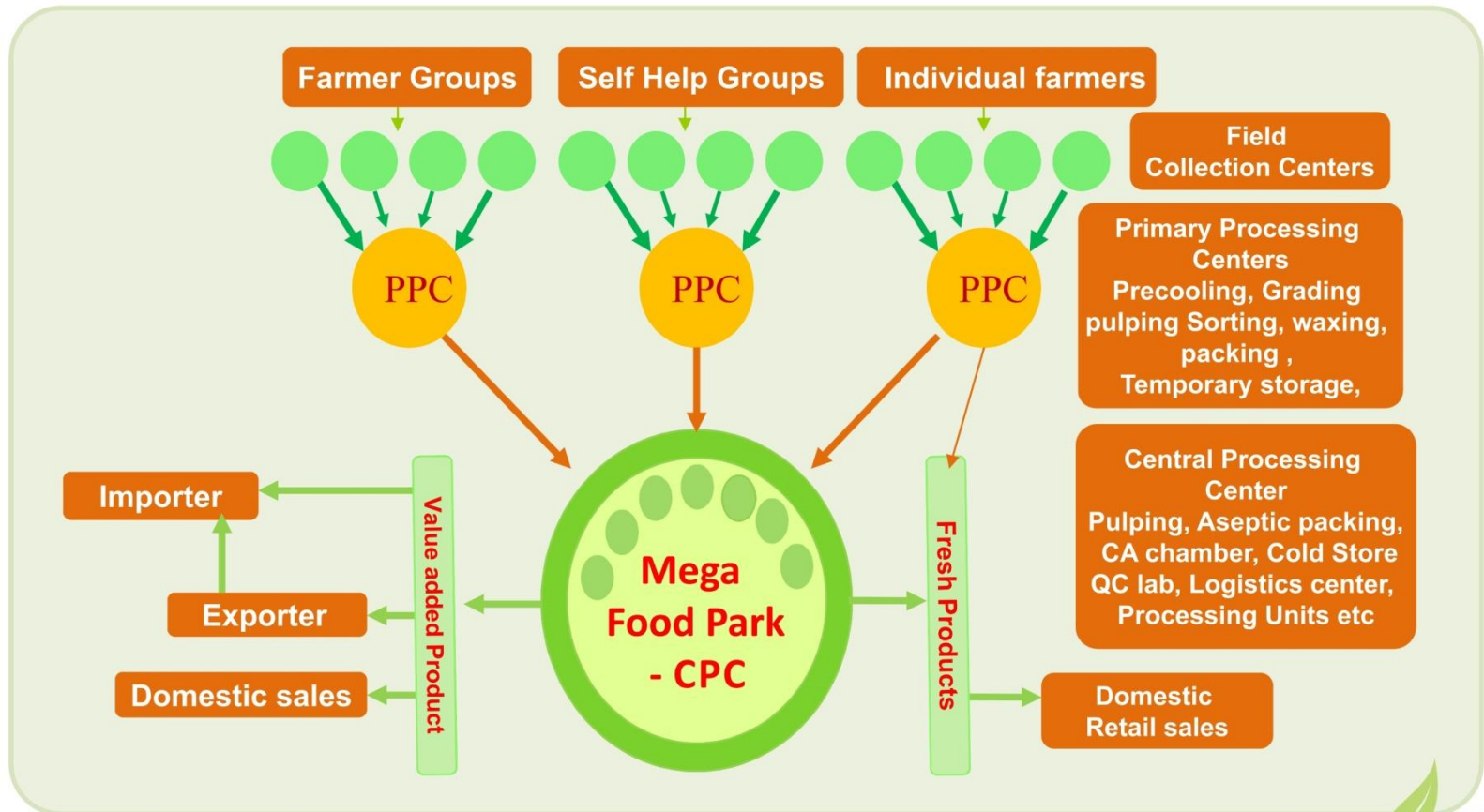
Mega Food Park (MFP)

An initiative of MoFPI - Govt. of India

MFP is a scheme launched by Ministry of Food Processing Industries (MoFPI) in 11th five year plan, with the objective industry, that will enable fresh investments into the food of providing adequate infrastructure for food processing processing sector, increased realization for farmers and employment generation.

MFP will have a Central Processing Centre (CPC), supported by common infrastructure and Primary Processing Centers (PPC) and collection centres.

Mega Food Park Model



Projects Highlights Paithan Mega Food Park

PROJECT LOCATION/ OVERVIEW

100 Acres of Land for CPC at Isswarwadi, Paithan	Primary Processing Centers (PPC): Paithan, Ahmadnagar, Parola (Jalgaon). Kunjirwadi (Pune), Nashik	Strategically located about 30 km from Aurangabad, in Central India MP, Gujarat, AP, CG, Karnataka Adjoining Borders	Basic Infrastructure (Power, Water, Roads) at door step	Industrial Plots Size: < 5000 – > 10000> SQM total 40 Plots. MSME Sheds: x 7 no.s
--	--	---	---	---

COMMON FACILITIES FOR FOOD PROCESSING UNITS

Sub Zero Cold Storage (Frozen) (1000MT)	IQF Facility (1 MT/Hr)	Pre – Cooling Facility (10MT)	Ripening Chamber Mango – 300 MT Banana – 100 MT	Steam Generation Unit (4 T/ Hr)	Reefer Van (5Nos)
					Food Testing Laboratory
Aseptic Pulping Line (5MT/Hr)	Cold Storage (1000 MT)	Dry Warehouse (70000 SQ FT)	Grain Silo (10000 MT)	Common Facility at PPC's	
				Grading and Sorting line (3 MT/ Hr)	

Paithan

Mega Food Park Pvt. Ltd.

Projects Highlights Paithan Mega Food Park

BACKWARD LINKAGES AND RAW MATERIALS

Farmer Empowerment Collection centers at farm level	Zone of Influence covers 11 Districts & 5 PPC's	Focus crops Mango Banana Pomegranate Grapes Sweet Lime Guava	Focus Crops Onion Tomato Okra Gherkins Carrot	Focus Crops Wheat, Jowar, Bajara, Maize, Soybean, Groundnut, Sesame, Bengal Gram,
--	---	---	---	--

FORWARD LINKAGES ADVANTAGES

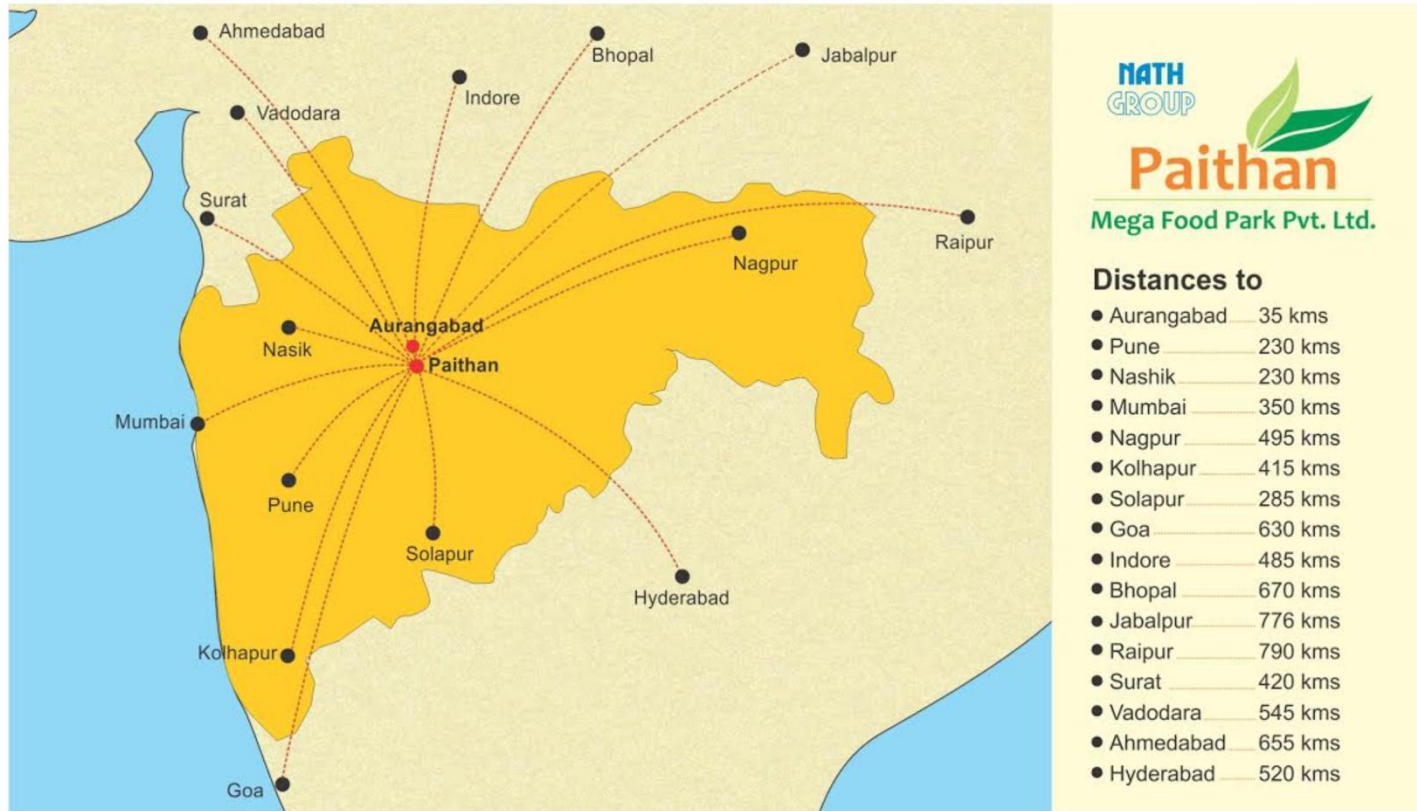
Strategic location for proximity to Major Markets, Mumbai, Pune, Nasik, Surat, Hyderabad etc;	Well connected through Rail, Road, Air/ Sea routes for ease of Transport, and with Cold chain of PMFPL	Fast growing Market of RTC/ RTE with growing Demand in all Market Segments	Advantage of Common branding and All India Marketing Through PMFPL	Food Processors will have Access to Multi-brand Retail Chains & Other Retailers
--	--	--	--	---



Mega Food Park Pvt. Ltd.

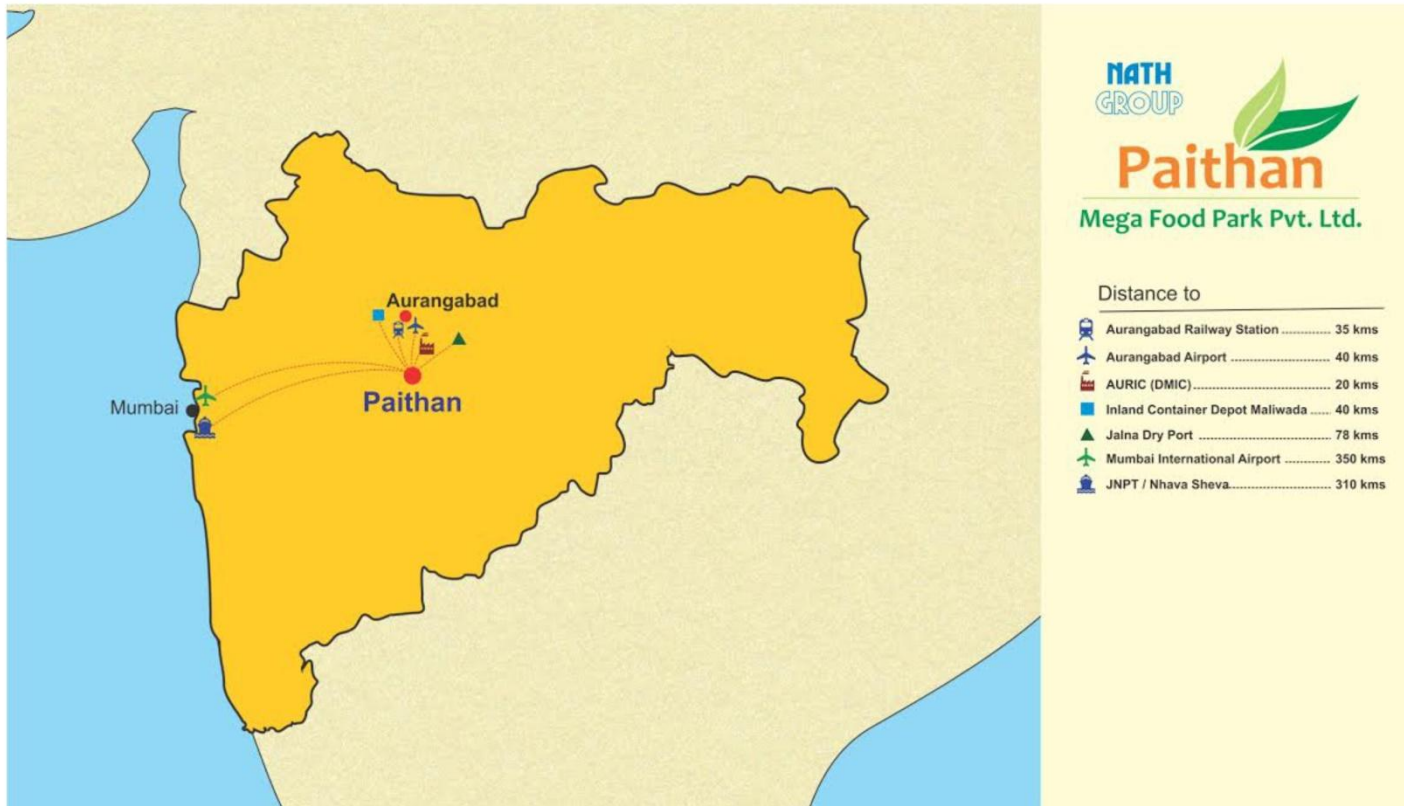
Strategic location

Paithan Mega Food Park is located near Paithan, 35 kms from Aurangabad, in the emerging industrial city of Maharashtra.



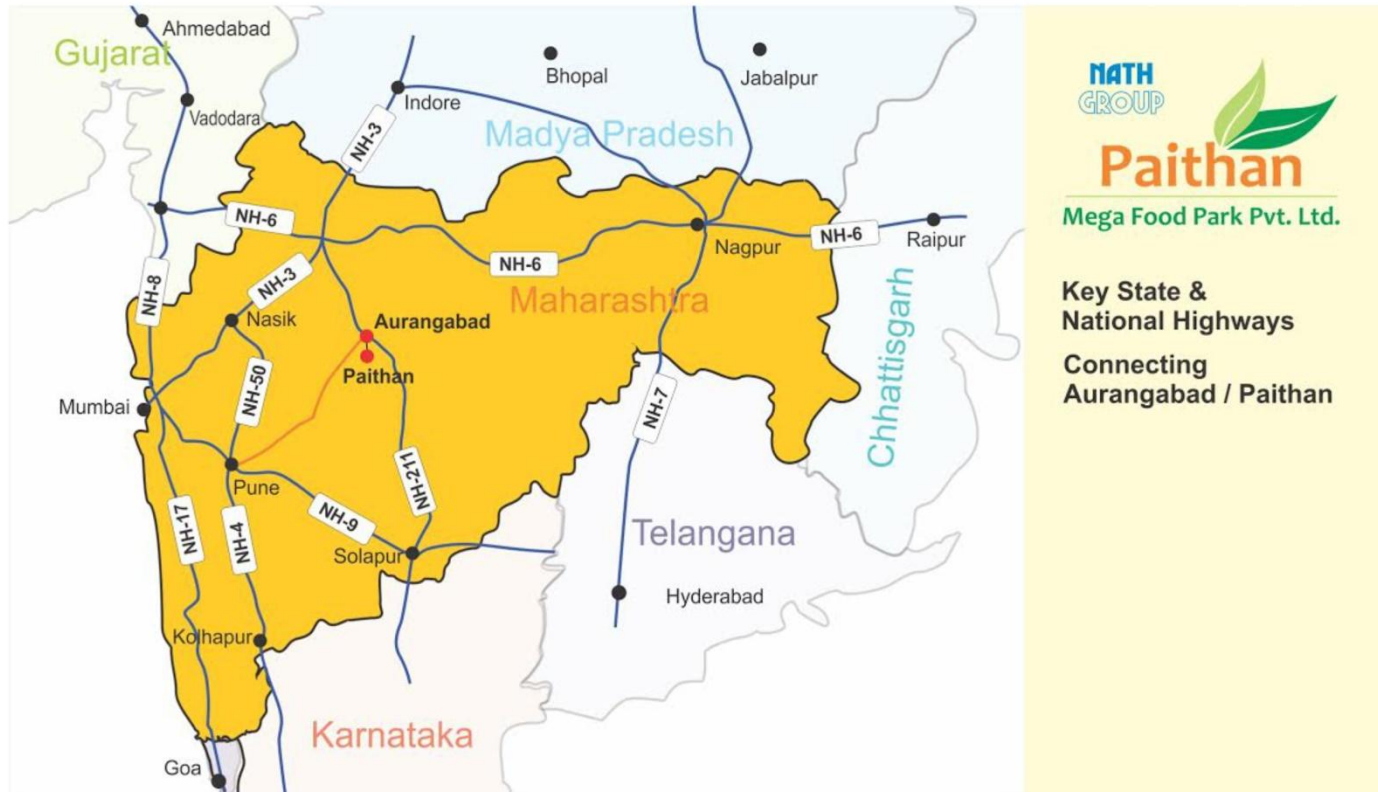
Strategic Location

Paithan Mega Food Park is located near Paithan, 35 kms from Aurangabad, in the emerging industrial city of Maharashtra.



Strategic Location

Paithan Mega Food Park is located near Paithan, 35 kms from Aurangabad, in the emerging industrial city of Maharashtra.



Ingredients of success:

- a) Abundance of raw materials
- b) Well developed markets

The eleven catchment districts of the PMFP are a basket of abundant horticultural and agricultural produce.

The catchment region produces approximately 5.7 million MT of cereals, 0.9 million MT pulses, 0.75 million MT oilseeds, 5.4 million MT vegetables and 6.2 million MT fruits.

- Major sorghum, maize ,wheat and pearl millet producing belt
- Chief source of supply for pulses such as pigeon-pea, chickpea, black gram and green gram
- Substantial production of oil seeds mainly soyabean, safflower, sesamum, groundnut and sunflower
- Specializes in supply of kesar mango, sweet lime, lime, pomegranate and gooseberry.
- Known for the production of banana, papaya, guava sapota and custard apple
- Steady source of supply of vegetables such as onion, tomato, beans, cucumber, carrot, cauliflower, cabbage, green peas, okra, brinjal, capsicum, gourds and a host of leafy vegetables
- Reliable source of supply for ginger, coriander, chilli, garlic, turmeric and tamarind

World class infrastructure

Paithan Mega Food Park spread over 110 acres offers integrated world class infrastructure conforming to international standards.

Common core processing facilities

- Collection Centres, sorting and grading facility
- Pre-cooling, cold storages, freezers and ripening chambers
- Dry warehouses, Silos
- Individual Quick Freezing Unit
- Asptic pulping and packaging line
- State of the art Food Testing Laboratory
- Steam generation unit
- Reefer vans



World class infrastructure

Basic infrastructure and utilities

- Well developed road network with storm water drainage
- Adequate parking area and traffic management system
- Weigh bridges
- Assured Power and water supply.
- Common water treatment, solid waste and effluent treatment plant.
- IT and Telecommunications support system



World class infrastructure

Social infrastructure

- Guest house
- Ready to use :
 - Offices
 - Administration Building
 - Training Centers and conference facilities
- Canteen and restaurants space
- Recreation space and rest rooms
- Creche
- Health clinic



Backward and forward linkages

- Procurement and warehouse management cell
- Extension cell
- Quality assurance cell
- Logistics and distribution cell
- Liaison and Marketing cell
- Assured supply of agricultural produce of desired quality & quantity through linkages with 5000 farmers for value added agriculture



Core infrastructure facilities at CPC-Paithan

Component	Capacity
Dry Warehouse for raw materials and Finished Goods	70000SFT
Grain silos	5000MT
Cold storage	1000MT
Sorting & Grading line	3MT per hour
Pre-Cooling facility	10MT
Freezer room for frozen vegetables	1000MT
IQF Facility	1MT per hour
Banana Ripening Chambers	100MT
Mango Ripening Chambers	300MT
Aseptic Pulping Line for Mango and other fruits with aseptic filling	5MT per hour
Steam Generation Unit	4 Ton per Hour
Food Testing Lab	-
Reefer vans	5
Ready Sheds for Micro, Small & Medium Enterprises	20



Five Primary Processing Centers

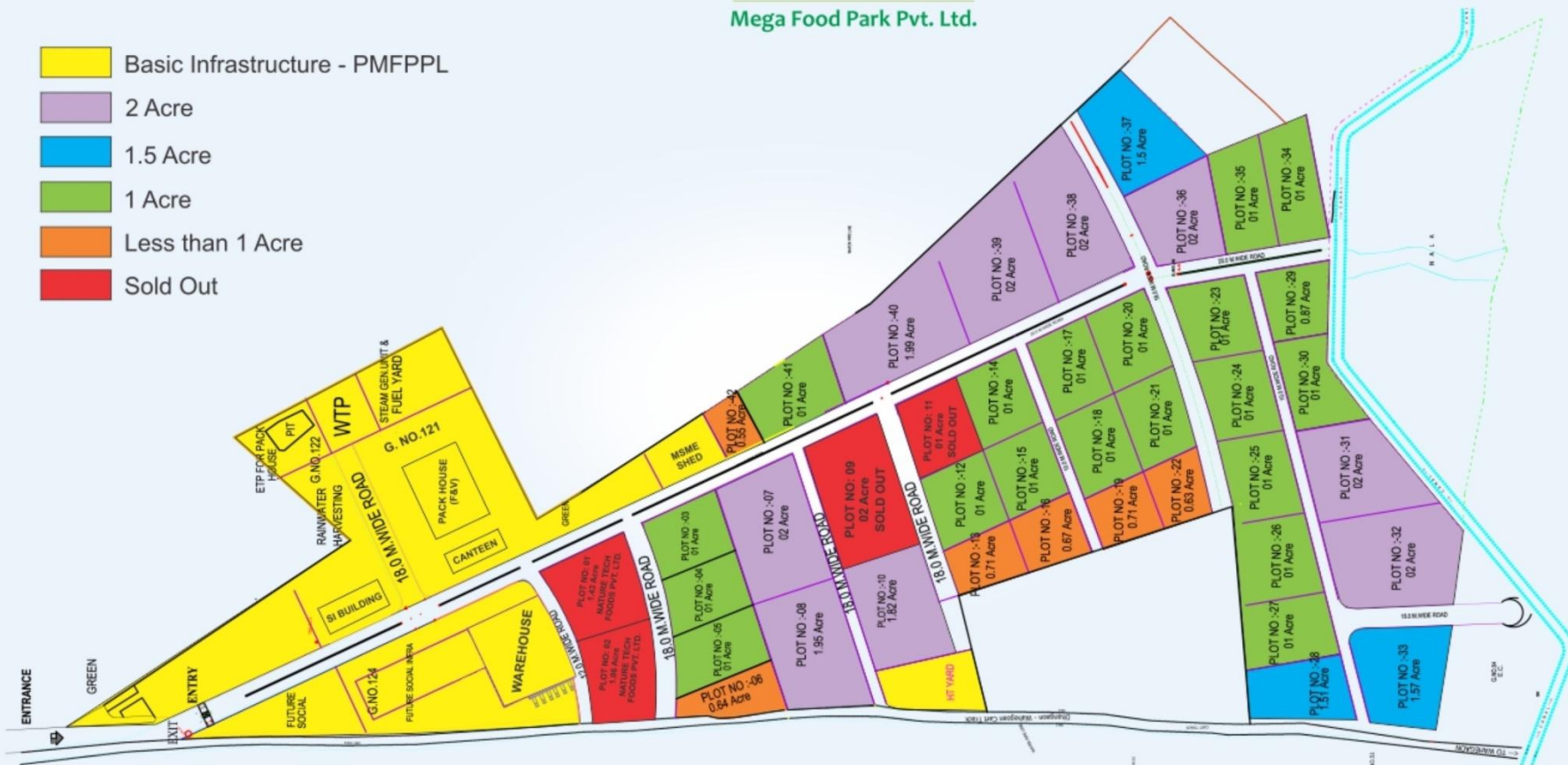
- Strategically located at producing hubs
- 1) Paithan 2) Ahmednagar 3) Kunjirwadi-Pune 4) Parola-Jalgaon 5) Nasik
- Will collect the Raw Material from Collection Centers.
- Supply raw material directly for Fresh Markets and to Units at Central Processing Center.
- PPC ensures proper post harvest management
- Has facilities for Grading, Sorting, Storage and Transport.

Benefits of being part of MFP

- A)
- Leveled plots as per requirement of Industries
 - Leasable plots for 99 years lease, are available at Rs. 175 per sqft. with 5 years free maintenance.
 - Water, Power, Effluent, Steam, Fire fighting line at door step.
 - QC lab, Industrial Exhibition hall, Product display center, Seminar hall & Meeting hall.
- B)
- Assured supply of diverse range of raw materials
 - Excellent Road, Rail and Air Connectivity
 - Availability of Skilled and Semi-skilled Manpower
 - Conducive Government Policy
 - Attractive Govt. Incentives

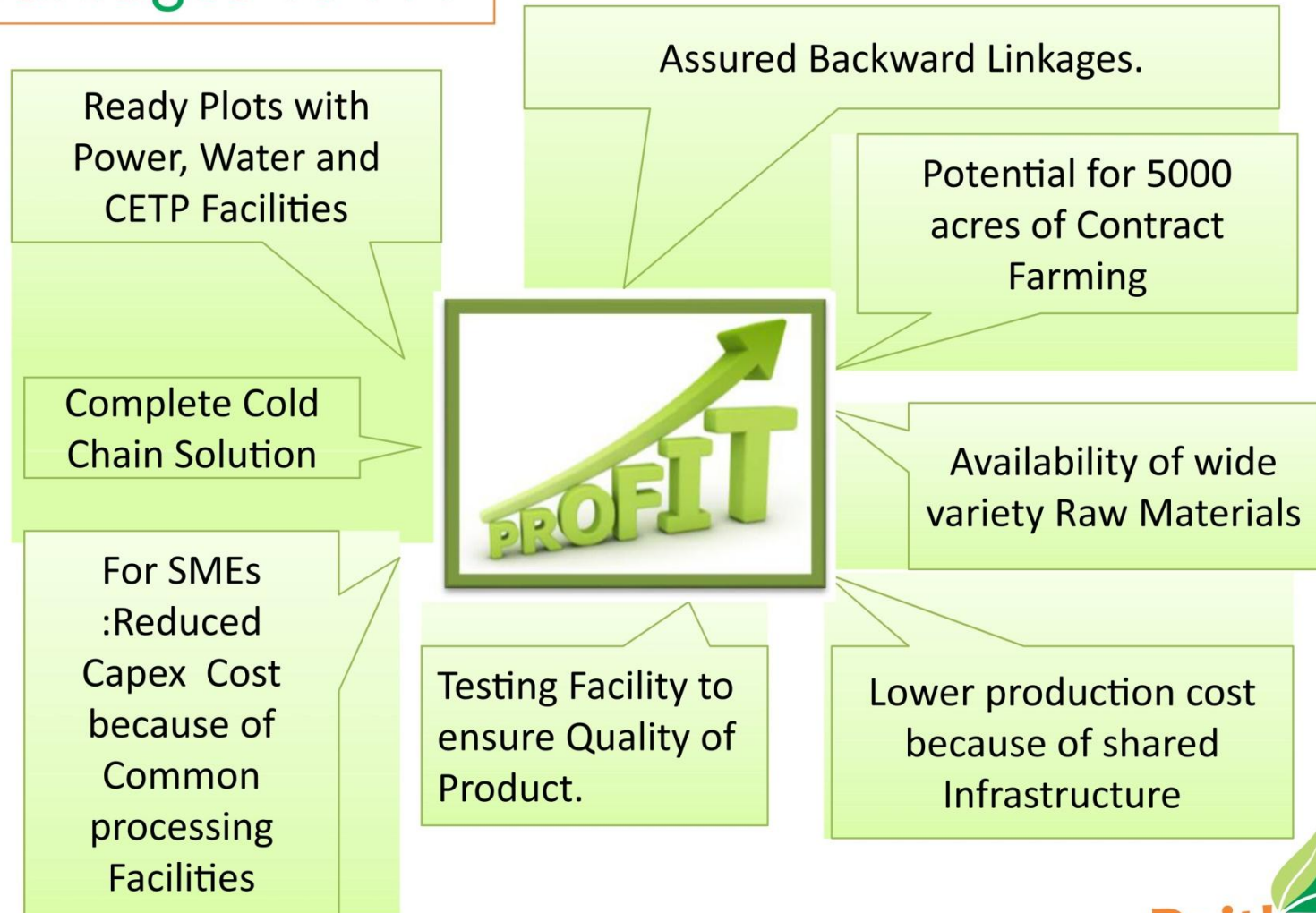
General Layout of Developed Plots for Investors

- Basic Infrastructure - PMFPPL
- 2 Acre
- 1.5 Acre
- 1 Acre
- Less than 1 Acre
- Sold Out



Plot No	1	2	3	4	5	6	7	8	9	10	11	12	13	14	15	16	17	18	19	20	21	22	23	24	25	26	27	28	29	30	31	32	33	34	35	36	37	38	39	40	41	42	
Area in Acres	1.43	1.06	1	1	1	0.64	2	1.95	2	1.82	1	1	0.71	1	1	0.67	1	1	0.71	1	1	0.63	1	1	1	1	1	1.51	0.87	1	1	2	1.57	1	1	2	1.5	2	2	1.99	1	0.55	
Area in M2	5786.96	4289.63	4046.83	4046.83	4046.83	2589.97	8093.65	7891.31	8093.65	7305.22	4046.83	4046.83	2873.25	4046.83	4046.83	2711.37	4046.83	4046.83	2873.25	4046.83	4046.83	2549.50	4046.83	4046.83	4046.83	4046.83	4046.83	6110.71	3520.74	4046.83	4046.83	8093.65	6353.52	4046.83	4046.83	8093.65	6070.24	8093.65	8093.65	8053.18	4046.83	2225.75	
Area in P2.	62290.31	46173.24	43559.7	43559.7	43559.7	27878.2	87119.3	84941.3	87119.3	79278.6	43559.7	43559.7	30927.4	43559.7	43559.7	29185	43559.7	43559.7	30927.4	43559.7	43559.7	27442.6	43559.7	43559.7	43559.7	43559.7	43559.7	65775.1	37806.9	43559.7	43559.7	87119.3	68388.7	43559.7	43559.7	87119.3	65339.5	87119.3	87119.3	86683.7	43559.7	23957.8	
State																																											

Advantages To FPI



Incentives/Benefits available for units in Paithan Mega Food Park

A) Capital Subsidy:

a) **Government of Maharashtra** - 25% subject to a maximum of Rs. 50 lacs.

b) **Other agencies:** Additional subsidy ranging from 15 to 30% based on the nature of projects and facilities from:

- I) Government of India-Ministry of Food Processing Industries (MoFPI),
- II) Government of Maharashtra-Ministry of Agriculture,
- III) National Horticulture Board (NHB),
- IV) National Horticulture Mission (NHM), and
- V) Agricultural & Processed Food Products Export Development Authority (APEDA).

B) Financial Assistance at Interest rate of 4.50% per annum

- I) NABARD to provide financial assistance @ 9.50% per annum to units located in the food park
- II) Additionally, Government of Maharashtra shall provide interest subsidy of 5.00% to small and medium scale units located in the food park.

Thus, the effective rate of interest shall be around 4.50% per annum.

C) Exemption from Income Tax

- I) 100% exemption from payment of Income Tax for first 5 years from commencement of production
- II) 50% exemption from payment of Income Tax for subsequent five years

D) Exemption from payment of VAT as per formula

"VAT" on local sales minus ITC(Input Tax Credit) or zero whichever is more
+ CST payable + 65% of ITC.

	Ceiling as % of fixed capital investment		No of years	
	MSME	LSI	MSME	LSI
Food Processing	90	60	11	8
Other industries	80	50	10	7

Units having capital investment not exceeding Rs.10 crores in plant and machinery are classified as MSME.

E) Exemption from stamp duty on lease/purchase of land

F) MSMEs eligibility for power subsidy

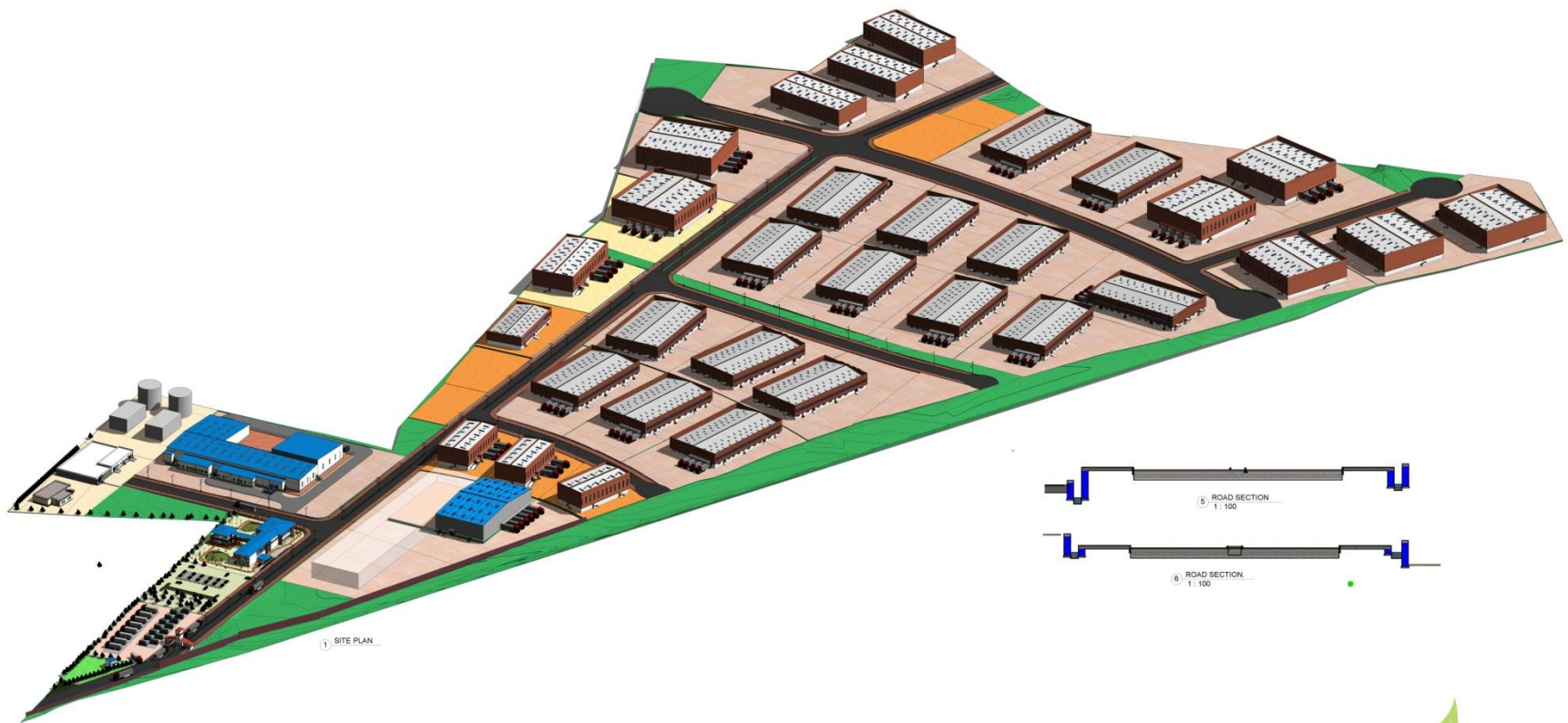
shall be around Rs. 2.50 per unit:

- Exemption from electricity duty approximately Rs. 0.50 to 0.75 per unit during eligibility period.
- Rebate of Rs. 1.00 to 1.50 per unit for units located in Marathwada.
- Power subsidy of Rs. 1.00 per unit for a period of three years for food processing units.

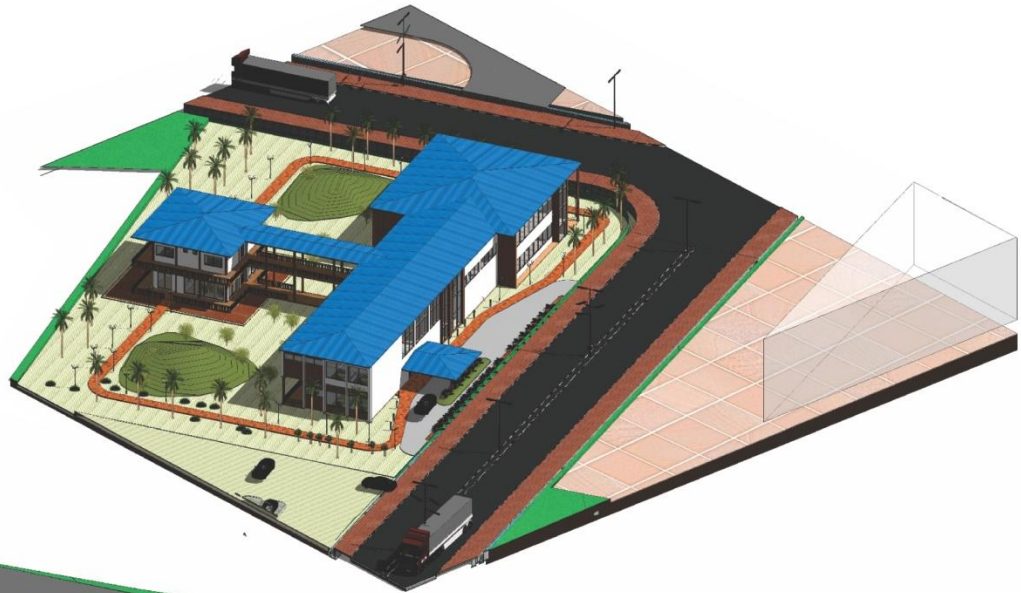
G) MSMEs eligible for 5% subsidy

on capital equipment for technology upgradation subject to a maximum of Rs.25.00 lacs.

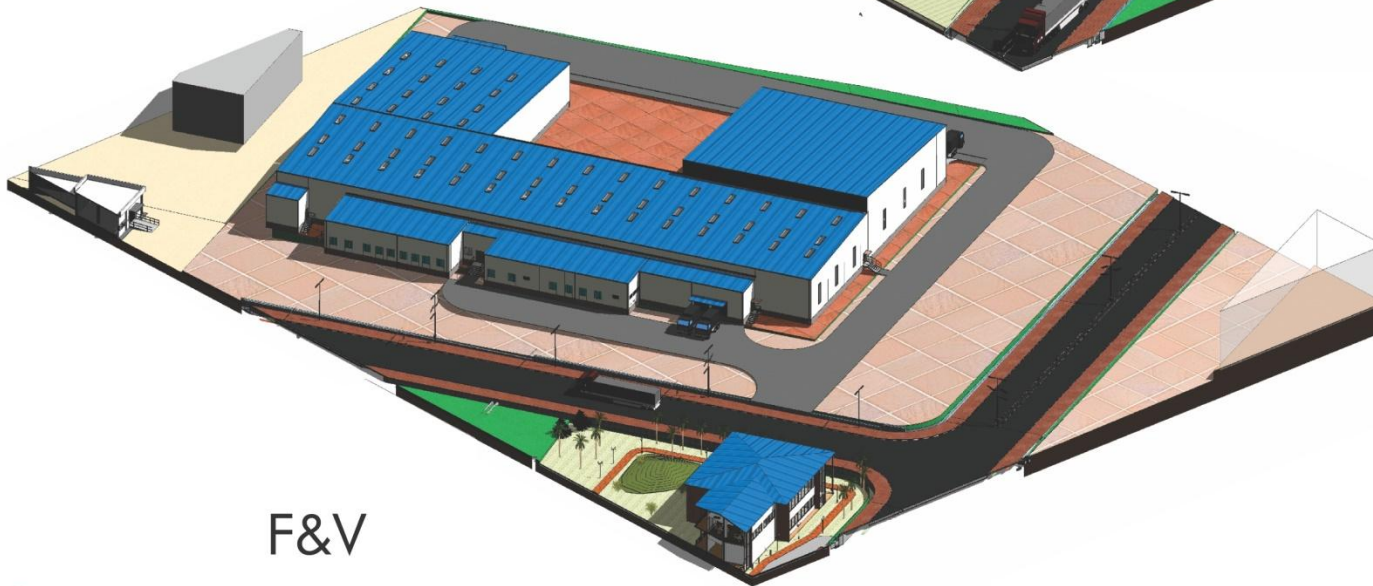
Conceptual Master Plan



Social Infra



F&V





Marketing Office:

I, Chateau Windsor, 86, Veer Nariman Road, Mumbai 400020

Tel: 022 22875653/4/5

Corporate Office:

Nath House, Nath Road, Aurangabad – 431005

Tel: 0240 2376314/5/6/7

www.paithanmegafoodpark.com

Paithan Mega Food Site, Isarwadi, Paithan